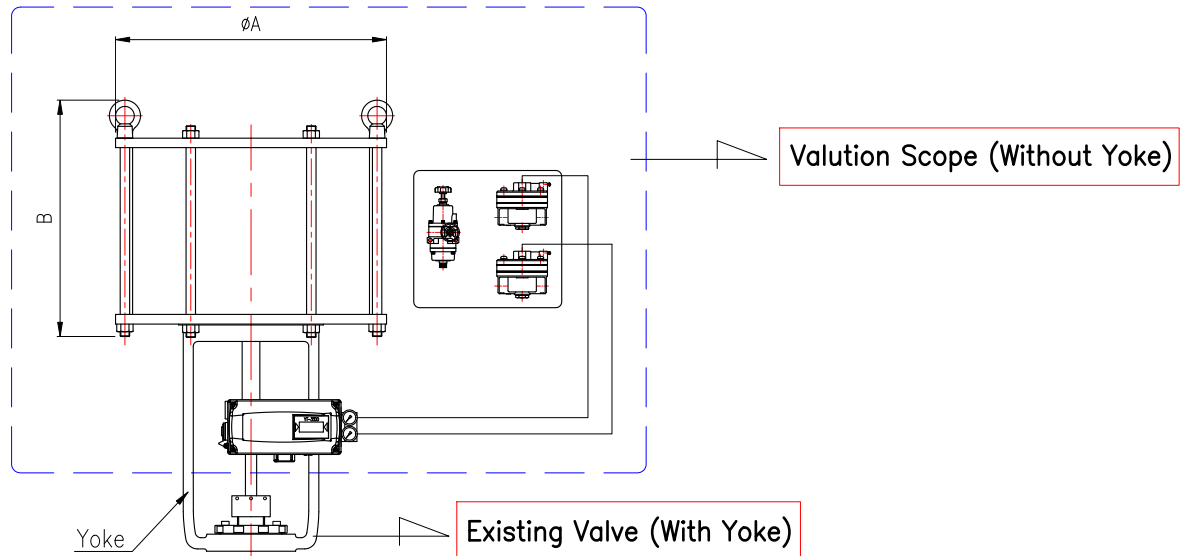
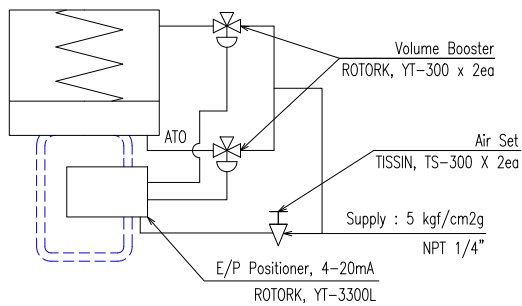


Model : V20-1L1001



* Air Piping Diagram



* Specification

- 1) Size & Rating : ANGLE 10"(250A) JIS 10K RF
- 2) Model : V20-1L1001
- 3) Thrust : 2,834 kgf
- 4) Body Material : A216 WCB
- 5) Action : AIR TO OPEN, FAIL CLOSE (BY SPRING)
- 6) Rated Kv : 650
- 7) Seat Leakage Class : ANSI/FCI CLASS IV
- 8) Stroke : 100 mm
- 9) Accessory :
 1. E/P Positioner : ROTORK, YT-3300L
 2. Volume Booster : ROTORK, YT-300 x 2ea
 3. Air Set : TISSIN, TS-300 X 2ea

* Dimensions(mm)

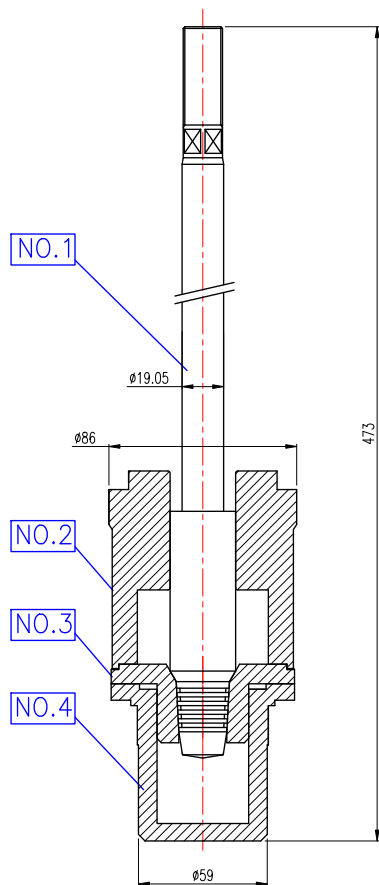
Dimensions(mm)		
Model Name	A	B
V20-1L1001 CYLINDER ACTUATOR	ø460	APPR. 400

MFR valuation Valution Inc. Korea			
TITLE DIMENSIONAL DWG. FOR 'V20-1L1001' CYLINDER ACTUATOR			
PRODUCT NAME PNEUMATIC SPRING CYLINDER ACTUATOR		MODEL V20-1L1001	
SIZE(inch) -	RATING(lbs) -	Q'ty. 1 SET	DRAWING NO. V240923-01
DATE 2024/09/23	DWN HY KIM	CHE'D YM SON	APP'D KC KIM
REV. 00	SCALE N/S	SHEET NO. 1/1	PROJECTION 1st

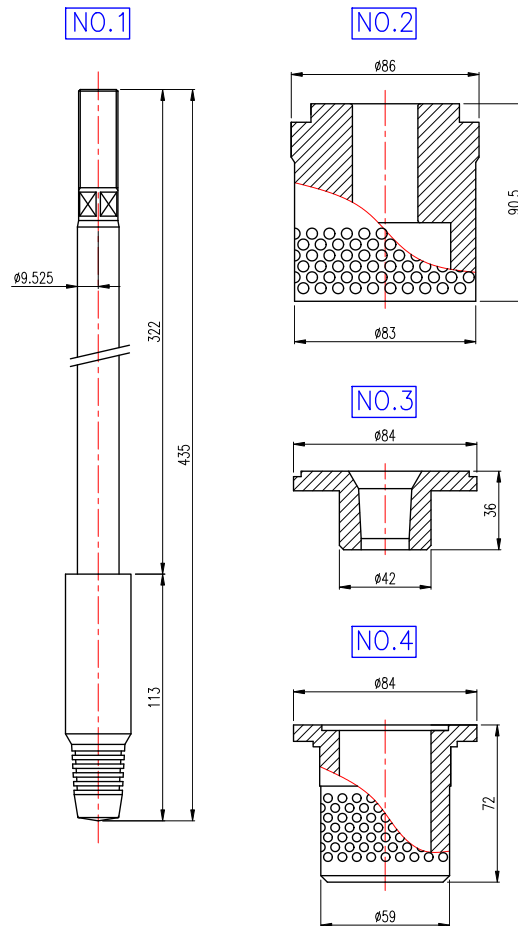
Tag No : 5B/5A-TCV-221

BILL OF MATERIALS DWG.

<TRIM ASS'Y DWG.>




<TRIM PART DETAIL DWG.>



THIS DRAWING IS THE PROPERTY OF VALUTION, INC. AND MUST NOT BE PARTIALLY OR WHOLLY COPIED OR USED FOR ANY OTHER PURPOSE WITHOUT PRIOR WRITTEN PERMISSION OF VALUTION.

PARTS LIST

NO.	PART NO.	PART NAME	MATERIAL	Q'TY	DRAWING NO.
1	V2407G40A01PS	PLUG STEM SET	440C/630 SS	1 SET	V240715-02
2	V2407G40A02TC	TOP CAGE	440C SS	1 EA	
3	V2407G40A03SR	SEAT RING	440C SS	1 EA	
4	V2407G40A04SD	SEAT DIFFUSER	440C SS	1 EA	

MFR				Valution Inc. Korea	
TITLE					
BILL OF MATERIALS DWG. FOR '5B/5A-TCV-221, TRIM PART' GL					
PRODUCT NAME			MODEL		
GLOBE VALVE TRIM SET			V2407G40AT		
SIZE(inch)	RATING(lbs)		DRAWING NO.	Q'ty.	
40A (1-1/2")	ANSI 1500# SW		V240715-02	1 SET	
DATE	DWN		CHE'D	APP'D	
2024/07/15	HY KIM		YM SON	KC KIM	
REV.	SCALE		SHEET NO.	PROJECTION	
00	N/S		1/1	1st	

10-211002A

THIS DRAWING IS THE PROPERTY OF VALUTION INC. AND
MUST NOT BE PARTIALLY OR WHOLLY COPIED OR USED FOR ANY
OTHER PURPOSE WITHOUT PRIOR WRITTEN PERMISSION OF VALUTION.

PARTS LIST

NO	NAME	MATERIAL	Q'TY	REMARKS
1	BODY	A216 WCB	1	
2	BONNET	A216 WCB	1	
3	VALVE STEM	304 SST	1	
4	STUD BOLT	A193 Gr. B7	4	
5	NUT	A194 Gr. 2H	4	
6	YOKE NUT	CF8	1	
7	YOKE	A216 WCB	1	
8	E/P POSITIONER	ROTORK, YT-1000L	1	
9	ACTUATOR ASSY	VALUTION, V10-#2	1	
10	LIFTING BOLT	304 SST	2	

ENGINEERING DATA

BODY & TRIM

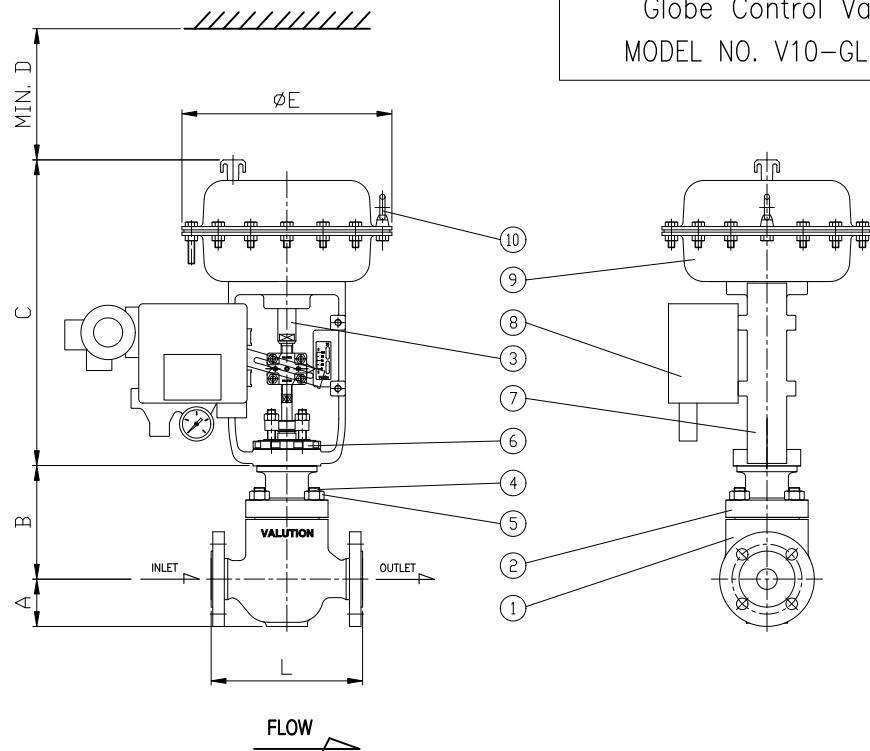
PRESS.CLASS	PN16 (In) / PN16 (Out)
DESIGN PRESS. / DESIGN TEMP.	13 barG / 50°
HYDROTEST PRESSURE	19.5 barG (Design Pressure x 1.5)
MAX Cv AT 100% STROKE	12

ACTUATOR

TYPE	SPRING DIAPHRAGM
SET PRESSURE	3.2 Kg/cm ² g
SIGNAL	IN/OUT 4~20 mA
INCREASING SIGNAL	OPEN
FAILURE POSITION / MECHANISM	CLOSE / SPRINGS
STROKE TIME(sec)	STD sec OPEN, STD sec CLOSE

NOTES:

- Nominal Size & Rating : DN25 PN16
- End Connection : RF
- Seat Leakage Class : ANSI Class IV
- Body Material : A216 WCB
- Rated Cv : 12
- Flow Characteristics : EQ%

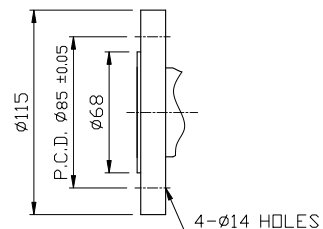


Globe Control Valve
MODEL NO. V10-GL1121

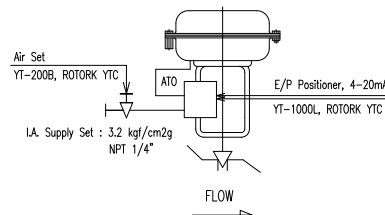
Dimensions(mm)

Dimensions(mm)						
Size & Ratings	L	A	B	C	D	E
DN25 PN16 RF	184 ±1.6	58	138	488	MIN. 300	Ø254

INLET & OUTLET FLANGE DIMENSION – DN25 PN16 RF



INSTRUMENT SCHEMATICS



Rev.	23/04/12	Date	HY Kim	Ym Son	KC Kim	FOR APPROVAL
Drawn	230412	Checked	230412	Approved	230412	Details of Revision
END USER						PC
E&C						Unit Code
Mfr.						KKS Code
Project						Rep. No.
Date						Rev.
Name						Page-No.
Scale : N/S						1/1
Model NO.: V10-GL1121						
Tag No. : FCV-1401						
MODEL NO. V10-GL1121						
(DN25 PN16 RF)						
Drawing No.						
V230412-01						

THIS DRAWING IS THE PROPERTY OF VALUTION INC. AND
MUST NOT BE PARTIALLY OR WHOLLY COPIED OR USED FOR ANY
OTHER PURPOSE WITHOUT PRIOR WRITTEN PERMISSION OF VALUTION.

PARTS LIST

NO	NAME	MATERIAL	Q'TY	REMARKS
1	BODY	A351 CF8M	1	
2	BONNET	A351 CF8M	1	
3	VALVE STEM	630 SST	1	
4	STUD BOLT	A193 Gr. B8	8	
5	NUT	A194 Gr. 8	8	
6	YOKE NUT	CF8	1	
7	YOKE	A216 WCB	1	
8	E/P POSITIONER	SMC, IP-8000	1	
9	ACTUATOR ASSY	VALUTION, V10-#5	1	
10	LIFTING BOLT	304 SST	2	

ENGINEERING DATA

BODY & TRIM	
PRESS.CLASS	ANSI 1500# (In) / ANSI 1500# (Out)
DESIGN PRESS. / DESIGN TEMP.	160 Kgf/cm2g / 180°
HYDROTEST PRESSURE	240 Kgf/cm2g (Design Pressure x 1.5)
MAX Cv AT 100% STROKE	17
ACTUATOR	
TYPE	SPRING DIAPHRAGM
SET PRESSURE	3.2 Kgf/cm2g
SIGNAL	IN/OUT 4~20 mA
INCREASING SIGNAL	OPEN
FAILURE POSITION / MECHANISM	CLOSE / SPRINGS
STROKE TIME(sec)	STD sec OPEN, STD sec CLOSE

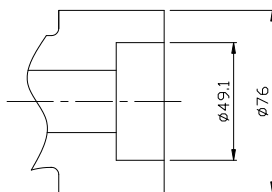
NOTES:

- Nominal Size & Rating : 40A (1-1/2") ANSI 1500#
- End Connection : SW
- Seat Leakage Class : ANSI Class IV
- Body Material : A351 CF8M
- Rated Cv : 17
- Flow Characteristics : MODIFIED EQ%

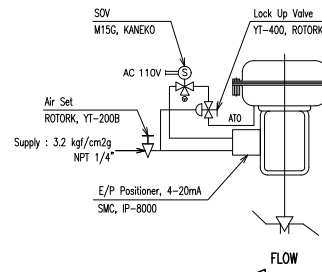
Dimensions(mm)

Dimensions(mm)						
Size & Ratings	L	A	B	C	D	E
40A(1-1/2") ANSI 1500# SW	298 ±1.6	82	226	679	MIN. 350	ø486

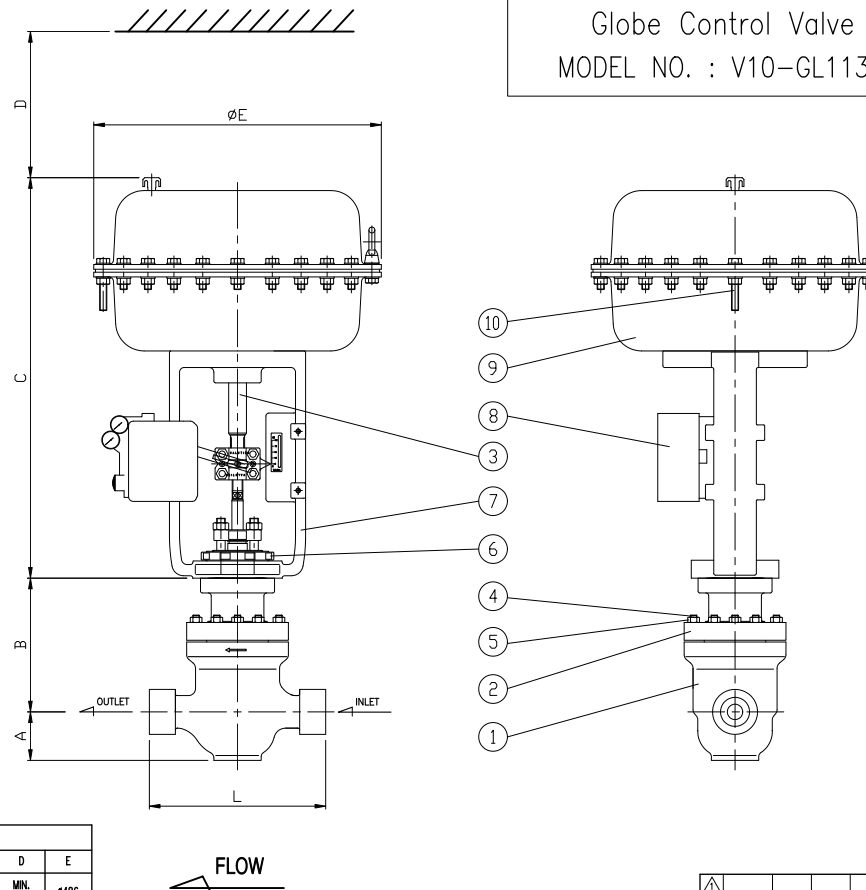
INLET & OUTLET FLANGE DIMENSION



INSTRUMENT SCHEMATICS



Globe Control Valve
MODEL NO. : V10-GL1134



Rev.	23/04/04	Date	HY Kim	Drawn	YM Son	Checked	KC Kim	Approved	FOR APPROVAL
Details of Revision									
END USER									
POSCO, Kwang-Yang Plant									
E&C									
Mfr.									
VALUTION, INC.									
Project									
PC									
Unit Code									
KKS Code									
Reg. No									
Rev.									
00									
Page-No. 1/1									
Drawing No. V230404-03									

10-92026-01

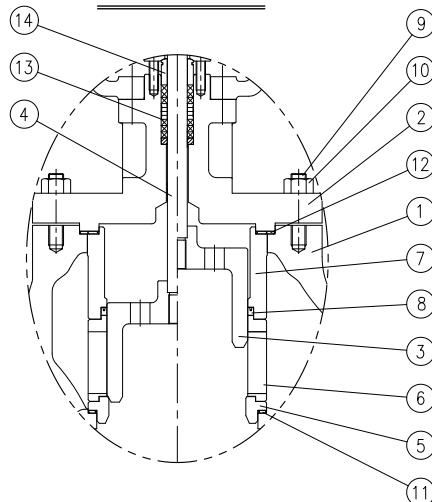
THIS DRAWING IS THE PROPERTY OF VALUTION INC. AND
MUST NOT BE PARTIALLY OR WHOLLY COPIED OR USED FOR ANY
OTHER PURPOSE WITHOUT PRIOR WRITTEN PERMISSION OF VALUTION.

PARTS LIST

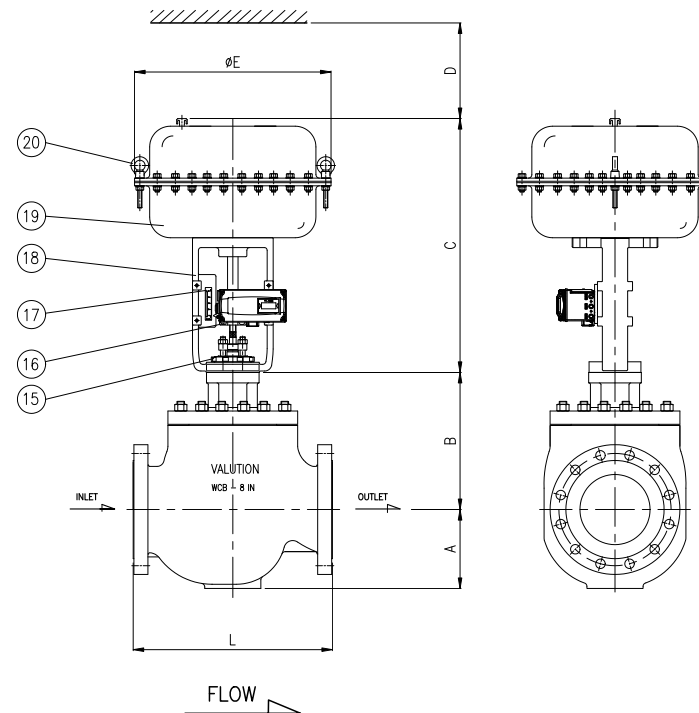
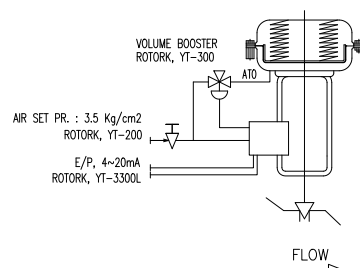
NO	NAME	MATERIAL	Q'TY	REMARKS
1	BODY	A216 WCB	1	
2	BONNET	A216 WCB	1	
3	VALVE PLUG	410 SST	1	
4	VALVE STEM	630 SST	1	
5	VALVE SEAT	410 SST	1	
6	BOTTOM CAGE	410 SST	1	
7	TOP CAGE	410 SST	1	
8	CAGE SEAL RING	PTFE + GRAPHITE	1	
9	STUD BOLT	A193 Gr. B7	12	
10	NUT	A194 Gr. 2H	12	
11	SEAT GASKET	316 SST + GRAPHITE	1	
12	BONNET GASKET	316 SST + GRAPHITE	1	
13	PACKING	PTFE + GRAPHITE	1 SET	
14	PACKING GLAND	316 SST	1	
15	YOKE NUT	CF8	1	
16	STEM CLAMP	CF8	1	
17	INDICATOR	304 SST	1	
18	YOKE	A216 WCB	1	
19	ACTUATOR ASSY	VALUTION, V10-#6	1	
20	LIFTING BOLT	304 SST	2	

Steam Pressure Control Valve
Tag No. : PCV-1002

Trim Construction



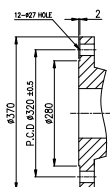
Instrument Schematics



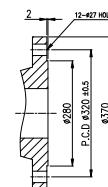
Dimensions(mm)

Dimensions(mm)						
Size & Ratings	L	A	B	C	D	E
8" JIS 30K RF	568 ±2	230	391	728	APPROX. 950	Ø565

INLET CONNECTION - 8"JIS 30K RF



OUTLET CONNECTION - 8"JIS 30K RF



ENGINEERING DATA

BODY & TRIM	
PRESS.CLASS	JIS 30K (In) / JIS 30K (Out)
DESIGN PRESS. / DESIGN TEMP.	25 BARG / 250°
HYDROTEST PRESSURE	37.5 BARG (Design Pressure x 1.5)
MAX Cv AT 100% STROKE	375
ACTUATOR	
TYPE	SPRING DIAPHRAGM
SET PRESSURE	3.5 KG/CM2
SIGNAL	IN 4~20 mA
INCREASING SIGNAL	OPEN
FAILURE POSITION / MECHANISM	CLOSE / SPRINGS
STROKE TIME(sec)	STD sec OPEN, STD sec CLOSE
VALVE AND ACTUATOR WEIGHT	
Approx. 640 kgs	

NOTES:

- Nominal Size & Rating : 8"(200A) JIS 30K
- End Connection : RF
- Seat Leakage Class : ANSI Class IV
- Body Material : A216 WCB
- Rated Cv : 375
- Flow Characteristics : EQ%

23/02/06	HY Kim	YM Son	KC Kim	FOR APPROVAL
Rev.	Date	Drawn	Checked	Approved
Details of Revision				
END USER				
POSCO, Kwang-Yang Plant				
E&C				
Mfr.				
VALUTION, INC.				
Project				
2계장 1.2RH 전공 UNIT Pr. CONTROL VALVE				
PC				
UAS Code				
Drawn	Date	Name	Scale : N/S	Model : GL-1332
230206	HY Kim	YM Son		
Checked	230206	YM Son		
Approved	230206	KC Kim		
POSCO-K				
Steam Pressure Control Valve				
(8IN JIS 30K RF)				
Dept.	ENG. DEPT.			Rep. No.
Tag No.	PCV-1002			Rev.
Drawing No.	V23026-01			Page-No. 1/1

THIS DRAWING IS THE PROPERTY OF VALUTION INC. AND
MUST NOT BE PARTIALLY OR WHOLLY COPIED OR USED FOR ANY
OTHER PURPOSE WITHOUT PRIOR WRITTEN PERMISSION OF VALUTION.

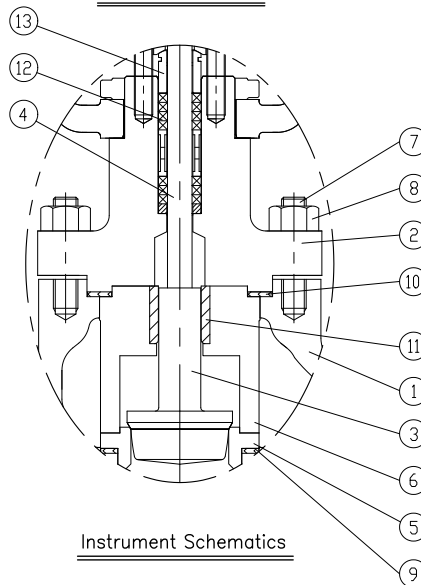
PARTS LIST

NO	NAME	MATERIAL	Q'TY	REMARKS
1	BODY	A351 CF8M	1	
2	BONNET	A351 CF8M	1	
3	VALVE PLUG	MONEL	1	
4	VALVE STEM	MONEL	1	
5	VALVE SEAT	MONEL	1	
6	RETAINER	MONEL	1	
7	STUD BOLT	A193 Gr. B8	8	
8	NUT	A194 Gr. 8	8	
9	SEAT GASKET	PTFE	1	
10	BONNET GASKET	PTFE	1	
11	GUIDE BUSH	RTFE	1	
12	PACKING	PTFE	1 SET	
13	PACKING GLAND	316 SST	1	
14	YOKE NUT	CF8	1	
15	YOKE	A216 WCB	1	
16	E/P POSITIONER	Simens, PS2	1	
17	ACTUATOR ASSY	VALUTION, V10-#4	1	
18	LIFTING BOLT	304 SST	2	

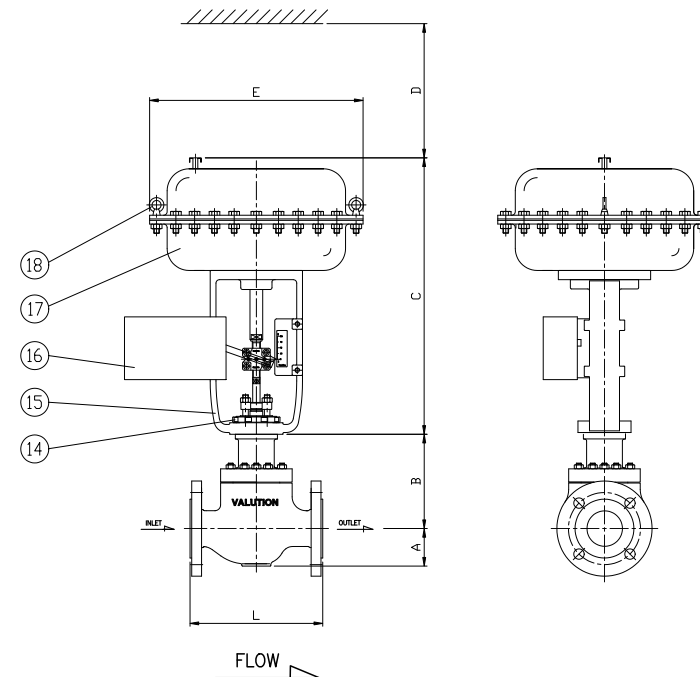
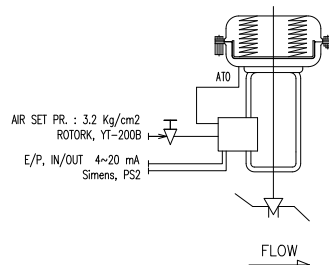
Oxygen Process Control Valve

Tag No. : 4800-CF04 & CF02

Trim Construction



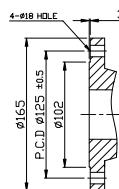
Instrument Schematics



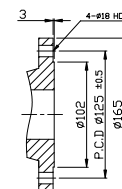
Dimensions(mm)

Dimensions(mm)						
Size & Ratings	L	A	B	C	D	E
DN50 PN40 RF	230 ±1.6	65	166	488	APPROX. 680	Ø375

INLET CONNECTION - DN50 PN40 RF



OUTLET CONNECTION - DN50 PN40 RF



ENGINEERING DATA

BODY & TRIM

PRESS.CLASS	PN40 (In) / PN40 (Out)
DESIGN PRESS. / DESIGN TEMP.	12 Kg/cm2g / 30°
HYDROTEST PRESSURE	18 BARG (Design Pressure x 1.5)
MAX Cv AT 100% STROKE	46

ACTUATOR

TYPE	SPRING DIAPHRAGM
SET PRESSURE	3.2 KG/CM2
SIGNAL	IN/OUT 4~20 mA
INCREASING SIGNAL	OPEN
FAILURE POSITION / MECHANISM	CLOSE / SPRINGS
STROKE TIME(sec)	STD sec OPEN, STD sec CLOSE

VALVE AND ACTUATOR WEIGHT Approx. 85 kgs

NOTES:

1. Nominal Size & Rating : DN50 PN40
2. End Connection : RF
3. Seat Leakage Class : ANSI Class IV
4. Body Material : A351 CF8M
5. Rated Cv : 46
6. Flow Characteristics : EQ%

23/02/06		HY Kim	YM Son	KC Kim	FOR APPROVAL	
Rev.	Date	Drawn	Checked	Approved	Details of Revision	
END USER						
POSCO, Kwang-Yang Plant						
E&C						
Mfr.						
VALUTION, INC.						
Project						
OXYGEN PROCESS CONTROL VALVE						
Date		Name	Scale : N/S	Model : GL-1121	Unit Code	
Drawn	230206	HY Kim			KMS Code	
Checked	230206	YM Son			Res. No	
Approved	230206	KC Kim			Rev.	
Dept.		ENG. DEPT.		00		
Tag No.		4800-CF04 & CF02		Page-No. 1/1		
Drawing No.		V230206-02		A03217433mm		

THIS DRAWING IS THE PROPERTY OF VALUTION INC. AND
MUST NOT BE PARTIALLY OR WHOLLY COPIED OR USED FOR ANY
OTHER PURPOSE WITHOUT PRIOR WRITTEN PERMISSION OF VALUTION.

PARTS LIST

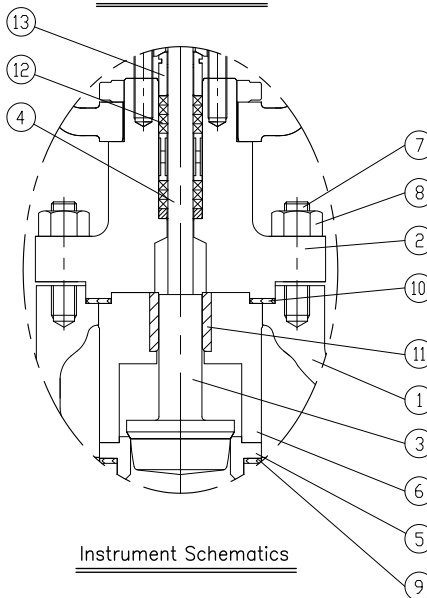
NO	NAME	MATERIAL	Q'TY	REMARKS
1	BODY	A351 CF8M	1	
2	BONNET	A351 CF8M	1	
3	VALVE PLUG	MONEL 400	1	
4	VALVE STEM	MONEL K-500	1	
5	VALVE SEAT	MONEL 400	1	
6	RETAINER	MONEL 400	1	
7	STUD BOLT	A193 Gr. B8	8	
8	NUT	A194 Gr. 8	8	
9	SEAT GASKET	PTFE	1	
10	BONNET GASKET	PTFE	1	
11	GUIDE BUSH	RTFE	1	
12	PACKING	PTFE	1 SET	
13	PACKING GLAND	316 SST	1	
14	YOKE NUT	CF8	1	
15	YOKE	A216 WCB	1	
16	E/P POSITIONER	ROTORK, YT-1000L	1	
17	ACTUATOR ASSY	VALUTION, V10-#4	1	
18	LIFTING BOLT	304 SST	2	

Oxygen Process Control Valve

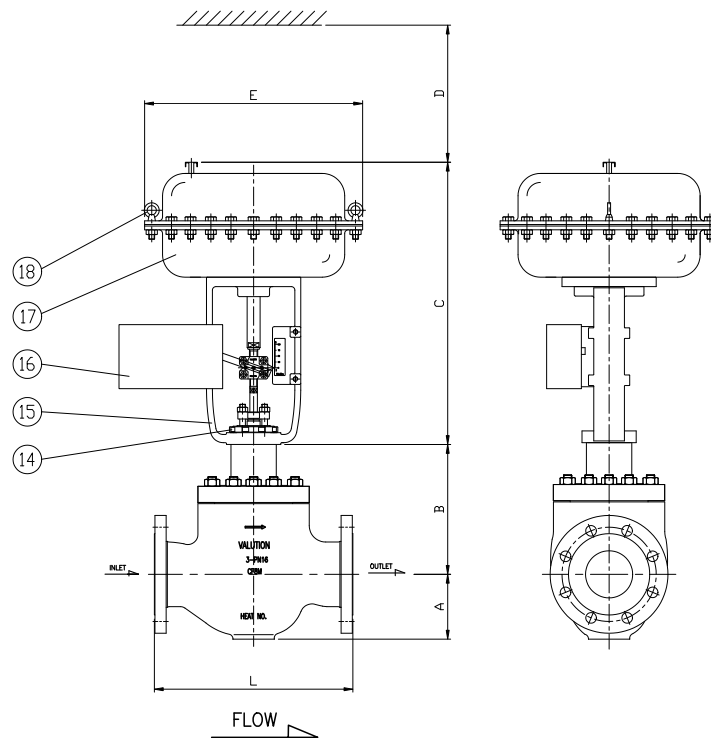
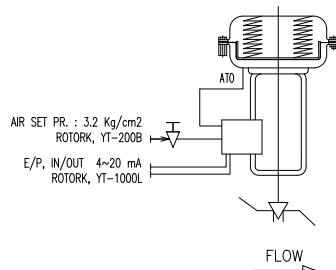
Tag No. : 17PIC-008 / PCV

MODEL NO. V10-GL1131

Trim Construction



Instrument Schematics



Dimensions(mm)

Dimensions(mm)						
Size & Ratings	L	A	B	C	D	E
3" DIN PN16 RF	337 ±1.6	110	221	488	APPROX. 680	±375

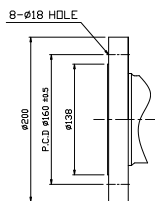
ENGINEERING DATA

BODY & TRIM	
PRESS.CLASS	PN16 (In) / PN16 (Out)
DESIGN PRESS. / DESIGN TEMP.	12 Kg/cm2g / 0° / 60°
HYDROTEST PRESSURE	18 BARG (Design Pressure x 1.5)
MAX Cv AT 100% STROKE	72
ACTUATOR	
TYPE	SPRING DIAPHRAGM
SET PRESSURE	3.2 KG/CM2
SIGNAL	IN/OUT 4~20 mA
INCREASING SIGNAL	OPEN
FAILURE POSITION / MECHANISM	CLOSE / SPRINGS
STROKE TIME(sec)	STD sec OPEN, STD sec CLOSE
POSITIONER	
ELECTRICAL CERTIFICATION	Ex dmb IIC T5 (KCs)
VALVE AND ACTUATOR WEIGHT	
Approx. 100 kgs	

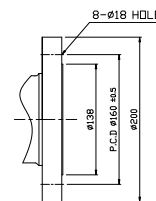
NOTES:

- Nominal Size & Rating : 3" DIN PN16
- End Connection : RF
- Seat Leakage Class : ANSI Class IV
- Body Material : A351 CF8M
- Rated Cv : 72
- Flow Characteristics : M-EQ%

INLET CONNECTION - 3" DIN PN16 RF



OUTLET CONNECTION - 3" DIN PN16 RF



Rev.	Date	Drawn	Checked	Approved	Details of Revision
24/01/26	HY Kim	YM Son	KC Kim		FOR APPROVAL

END USER

POSCO, Kwang-Yang Plant

E&C

Mfr.



VALUTION, INC.

Project				PC
OXYGEN PROCESS CONTROL VALVE				Unit Code
Drawn	240126	HY Kim	Scale : N/S	Model : GL-1131
Checked	240126	YM Son		KKS Code
Approved	240126	KC Kim		Reg. No
POSCO-K Oxygen Process Control VALVE (3" DIN PN16 RF)				Rev.
17PIC-008 / PCV				00
V240126-01				1/1

THIS DRAWING IS THE PROPERTY OF VALUTION INC. AND
MUST NOT BE PARTIALLY OR WHOLLY COPIED OR USED FOR ANY
OTHER PURPOSE WITHOUT PRIOR WRITTEN PERMISSION OF VALUTION.

PARTS LIST

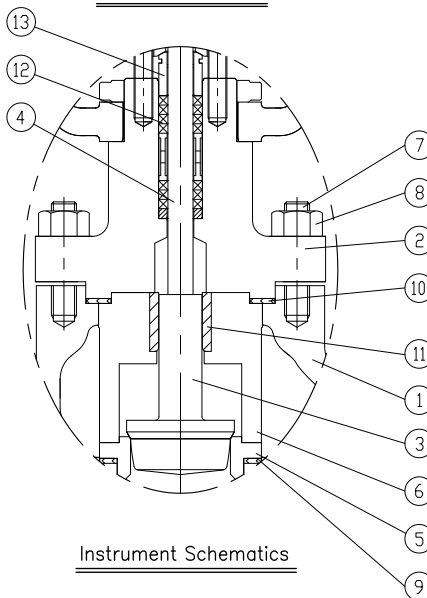
NO	NAME	MATERIAL	Q'TY	REMARKS
1	BODY	A351 CF8M	1	
2	BONNET	A351 CF8M	1	
3	VALVE PLUG	MONEL 400	1	
4	VALVE STEM	MONEL K-500	1	
5	VALVE SEAT	MONEL 400	1	
6	RETAINER	MONEL 400	1	
7	STUD BOLT	A193 Gr. B8	8	
8	NUT	A194 Gr. 8	8	
9	SEAT GASKET	PTFE	1	
10	BONNET GASKET	PTFE	1	
11	GUIDE BUSH	RTFE	1	
12	PACKING	PTFE	1 SET	
13	PACKING GLAND	316 SST	1	
14	YOKE NUT	CF8	1	
15	YOKE	A216 WCB	1	
16	E/P POSITIONER	ROTORK, YT-1000L	1	
17	ACTUATOR ASSY	VALUTION, V10-#4	1	
18	LIFTING BOLT	304 SST	2	

Oxygen Process Control Valve

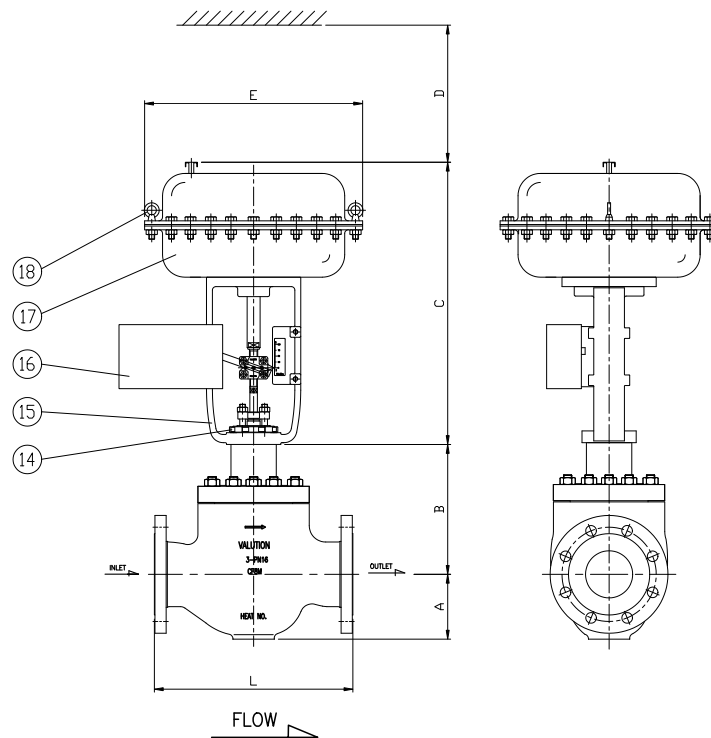
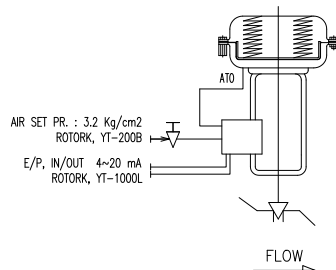
Tag No. : 12FIC-012, 12FIC-013 / FCV

MODEL NO. V10-GL1131

Trim Construction



Instrument Schematics



Dimensions(mm)

Dimensions(mm)						
Size & Ratings	L	A	B	C	D	E
3" DIN PN16 RF	337 ±1.6	110	221	488	APPROX. 680	φ375

Rev.	Date	Drawn	Checked	Approved	Details of Revision
END USER					

POSCO, Kwang-Yang Plant

E&C

Mfr.



VALUTION, INC.

Project

OXYGEN PROCESS CONTROL VALVE

PC

Date

Name

Scale : N/S

Model : GL-1131

Unit Code

Drawn

240126

HY Kim

Title

KKS Code

Checked

240126

YM Son

Rep. No

Approved

240126

KC Kim

Rev.

00

Dept.

ENG. DEPT.

Tag No.

12FIC-012, 12FIC-013 / FCV

Drawing No.

V240126-02

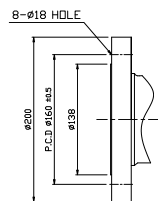
Page-No.

1/1

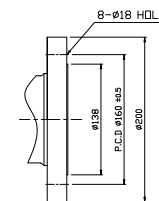
NOTES:

1. Nominal Size & Rating : 3" DIN PN16
2. End Connection : RF
3. Seat Leakage Class : ANSI Class IV
4. Body Material : A351 CF8M
5. Rated Cv : 72
6. Flow Characteristics : M-EQ%

INLET CONNECTION - 3" DIN PN16 RF



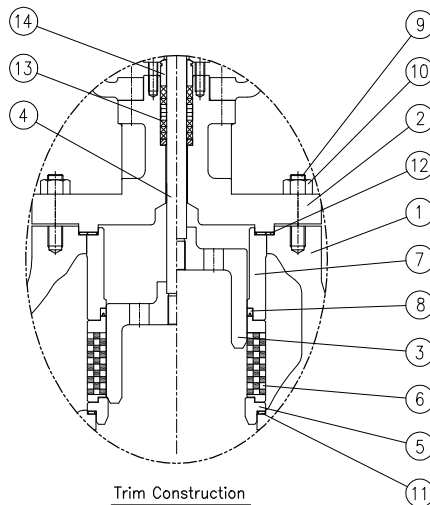
OUTLET CONNECTION - 3" DIN PN16 RF



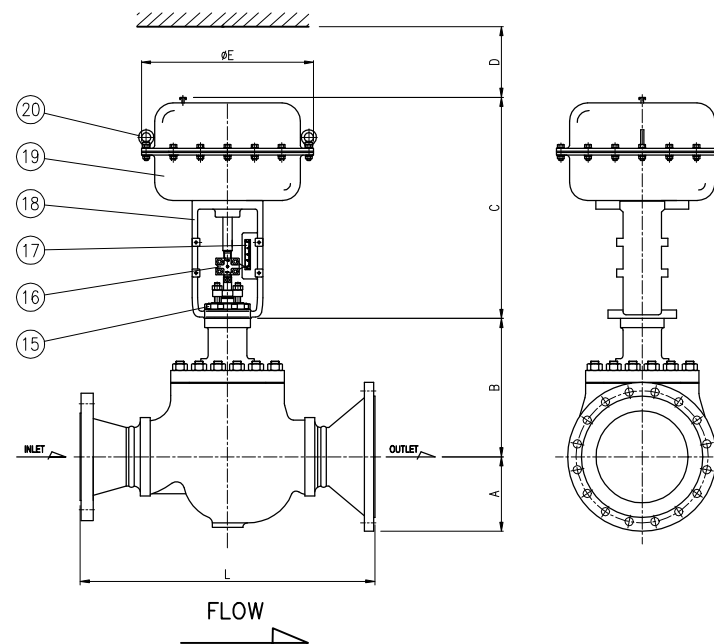
THIS DRAWING IS THE PROPERTY OF VALUTION INC. AND
MUST NOT BE PARTIALLY OR WHOLLY COPIED OR USED FOR ANY
OTHER PURPOSE WITHOUT PRIOR WRITTEN PERMISSION OF VALUTION.

PARTS LIST

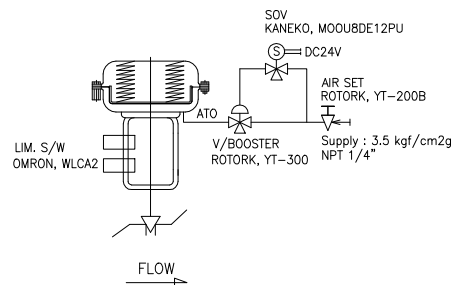
NO	NAME	MATERIAL	Q'TY	REMARKS
1	BODY	A216 WCB	1	
2	BONNET	A216 WCB	1	
3	VALVE PLUG	410 SST	1	
4	VALVE STEM	630 SST	1	
5	VALVE SEAT	410 SST	1	
6	BOTTOM GAGE	410 SST	1	
7	TOP GAGE	410 SST	1	
8	CAGE SEAL RING	GRAPHITE	1	
9	STUD BOLT	A193 Gr. B7	12	
10	NUT	A194 Gr. 2H	12	
11	SEAT GASKET	316 SST + GRAPHITE	1	
12	BONNET GASKET	316 SST + GRAPHITE	1	
13	PACKING	GRAPHITE	1 SET	
14	PACKING GLAND	316 SST	1	
15	YOKE NUT	CF8	1	
16	STEM CLAMP	CF8	1	
17	INDICATOR	304 SST	1	
18	YOKE	A216 WCB	1	
19	ACTUATOR ASSY	VALUTION, V10	1	
20	LIFTING BOLT	304 SST	2	

Steam Pressure Control Valve
Model : GL-1932

Trim Construction



Instrument Schematics



Dimensions(mm)

Dimensions(mm)						
Size & Ratings	L	A	B	C	D	E
8"x12" ASME 600# X 300# PN63 RF X PN25 RF	960±5	243	451	721	950	Ø560

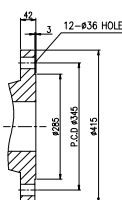
ENGINEERING DATA

BODY & TRIM	
PRESS.CLASS	ASME 600 (In) / ASME 300 (Out)
DESIGN PRESS. / DESIGN TEMP.	43 BARG / 255°
MAX. PRESS AT 100°F	102.1 BARG
HYDROTEST PRESSURE	64.5 BARG (Design Pressure x 1.5)
MAX Cv AT 100% STROKE	450
MAX SEAT LEAKAGE	ANSI/FCI CLASS V
BONNET FLG. NUT TORQUE	550-620 Nm
ACTUATOR	
TYPE	SPRING DIAPHRAGM
SET PRESSURE	3.5 KG/CM2
SIGNAL	IN DC 24V
INCREASING SIGNAL	OPEN
FAILURE POSITION / MECHANISM	CLOSE / SPRINGS
NOMINAL STROKE	80 MM
STROKE TIME(sec)	STD sec OPEN, STD sec CLOSE
VALVE AND OPERATOR WEIGHT	Approx. 1140kg

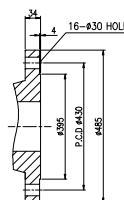
NOTES:

- Nominal Size & Rating : 8" ASME 600# X 12" ASME 300#
- End Connection : DIN 8"(DN200) PN63 RF X 12"(DN300) PN25 RF
- Seat Leakage Class : ANSI Class V
- Body Material : A216 WCB
- Rated Cv : 450
- Flow Characteristics : Modified EQ-%

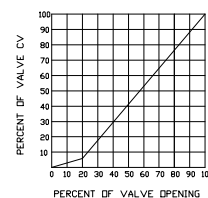
INLET CONNECTION - 8"/PN63/RF



OUTLET CONNECTION - 12"/PN25/RF



FLOW CHART



21/05/03				HY Kim	DaisyKim	KC Kim	FOR APPROVAL	
Rev.	Date	Drawn	Checked	Approved	Details of Revision			
END USER								
E&C								
Mfr. VALUTION, INC.								
Project REPLACEMENT						PC		
Date	Name	Scale : N/S	Model : GL-1932		Unit Code			
Drawn	210503	HY Kim	Title		KKS Code			
Checked	210503	Daisy Kim	Steam Pressure Control Valve (BIN X 12IN, PN63 RF X PN25 RF)		Rep. No.			
Approved	210503	KC Kim			Rev. 0			
Dept.		ENG. DEPT.		Page-No. 1/1				
Tap No.								
Drawing No.		V210503-11						