

## Model PCV Series, Pressure Regulating Valves

Valution's PCV series regulators are valves that adjust the variable pressure of fluid such as gas and liquid used as an energy source by self acting without external power.

PCV series are divided into a Pressure Reducing Valve (secondary pressure reducing valve, Seat normal open) that decompresses and keeps the secondary pressure constant, and a Pressure Relief Valve (primary pressure regulating valve, Seat normal close) that opens and starts discharging when overpressure (set pressure) occurs.

It can be applied to the pressure adjustment of compressed air, gas, liquids (water, chemical liquids) in boilers, heat exchangers, fire prevention lines, industrial ovens or process engineering.

The structure of the body is the Straight Globe pattern, and soft and metal seats can be applied according to the Seat tightness requirements.

The sensing structure is generally integral, and external type is also possible depending on the requirements.



Figure 1. PRV-PCV Series, Pressure Reducing Valves

< Fig. 1 >

## 1. Numbering System

Model : PCV
RV-11 : Pressure Reducing Valves, for 2" or Lager Sizes, Casting Body
RV-12 : Pressure Relief Valves, for 2" or Lager Sizes, Casting Body
RV-21 : Pressure Reducing Valves, for 1/2" to 2" Sizes
RV-22 : Pressure Relief Valves, for 1/2" to 2" Sizes
RV-31 : Micro Pressure Reducing Valves
RV-32 : Micro Pressure Relief Valves
Actuator Type : Spring Diaphragm or Spring Cylinder, Installed on the body
Body Pattern : Straight Globe Pattern

## 2. Features

- Low-maintenance proportional regulators
- Compact regulator design providing excellent control accuracy
- Internal set point springs with set point adjustment using a bolt on the actuator
- Spring-loaded, single-seated valve, balanced-seated
- External connection of a control line with option
- Meets strict emission requirements
- Minimum leakage class IV

Standard versions

- Valves in NPS ½ to 8 (DN 15 to 200)
- Flanged, Threaded, Welding end connections
- Body made of CF8(304SS), CF8M(316SS), CF3M(316L) or Hastelloy, Titanium and other alloy steels.
- Soft diaphragm and seals

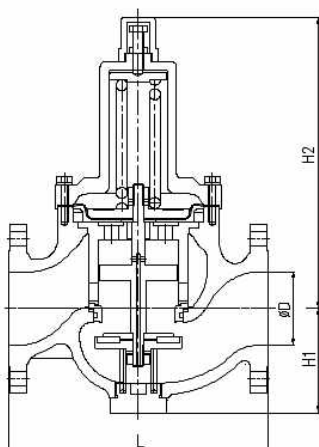
### 3. Model PCV, RV-11 & 12 Series

RV-11 : Pressure Reducing Valves, for 2" or Lager Sizes, Casting Body

RV-12 : Pressure Relief Valves, for 2" or Lager Sizes, Casting Body

#### Standard Specifications

- Valve Sizes : NPS 2" to 8" (DN 50 to 200)
- Pressure Ratings : ASME Class 150, 300, 600
- Flanged End Connections (Optional : Welding ends)
- Body made of CF8(304SS), CF8M(316SS), CF3M(316L) or Hastelloy, Titanium and other alloy steels.
- Applicable Media : Liquids, Gas
- Applicable Temp. : -10 ~ 80°C (Other ranges : optional)
- Minimum Applicable DP : 0.5 bar
- Spring Range : 0.5~3.0 bar, 3.0~6.5 bar, 6.5~10 bar
- Leakage Class : ANSI Class IV (Optional : Class V, VI)
- Max. Pr. Reduction Ratio = 5 : 1



< Fig. 2 >

Dimensions (mm)						
Body Size (IN)	ØD	L			H1	H2
		Class 150	Class 300	Class 600		
2"	50	254	267	286	102	250
3"	80	298	318	337	132	305
4"	100	352	368	394	160	395
6"	150	451	473	508	215	505
8"	200	543	568	610	275	615

< Table 1 > RV-11 & 12, Dimensions



< Fig. 3 >

Valve Rated Cv Table					
Size	2"(50)	3"(80)	4"(100)	6"(150)	8"(200)
Rated Cv	20	75	125	200	275

< Table 2 > RV-11 & 12, Valve Rated Cv

#### \*. Note

1. All data shown in this product specification are currently standard specifications of Valution and can be customized by order specification.
2. All data shown above are subject to change without notice.

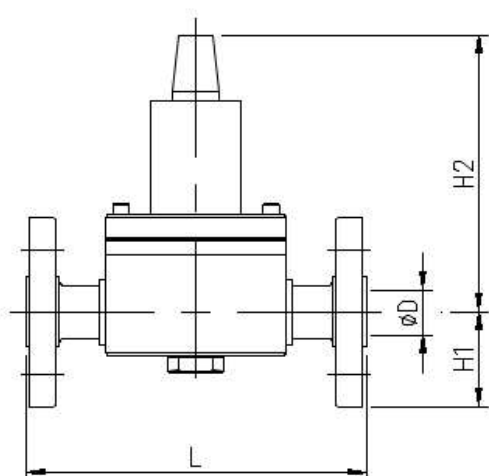
## 4. Model PCV, RV-21 & 22 Series

RV-21 : Pressure Reducing Valves, for 1/2" to 2" Sizes

RV-22 : Pressure Relief Valves, for 1/2" to 2" Sizes

### Standard Specifications

- Valve Sizes : NPS 1/2" to 2" (DN 15 to 50)
- Pressure Ratings : ASME Class 150, 300, 600
- Flanged, Threaded End Connections (Optional : Welding ends)
- Body made of 304SS, 316SS, 316L or Hastelloy, Titanium and other alloy steels.
- Applicable Media : Liquids, Gas
- Applicable Temp. : -10 ~ 80°C (Other ranges : optional)
- Minimum Applicable DP : 0.5 bar
- Spring Ranges : 0.5~3.0 bar, 3.0~6.5 bar, 6.5~10 bar
- Leakage Class : ANSI Class IV (Optional : Class V, VI)
- Max. Pr. Reduction Ratio = 5 : 1



< Fig. 4 >

Dimensions, Flanged (mm)				
Body Size (IN)	ØD	L	H1	H2
1/2"	15	209	49~59	150~165
3/4"	20	209	49~59	150~165
1"	25	220	55~70	160~175
1.5"	40	235	55~85	160~185
2"	50	254	65~98	170~210

< Table 3 > RV-21 & 22, Dimensions

Valve Rated Cv Table					
Size	1/2"(15)	3/4"(20)	1"(25)	1.5"(40)	2"(50)
Rated Cv	4	5.5	8	14	22
* The 'Cv' recorded in the table above is the rated capacity(Max.), and the minimum flow rate adjustment range is Cv=0.06 by optional.					

< Table 4 > RV-21 & 22, Valve Rated Cv



< Fig. 5 >

### \*. Note

1. All data shown in this product specification are currently standard specifications of Valution and can be customized by order specification.
2. All data shown above are subject to change without notice.

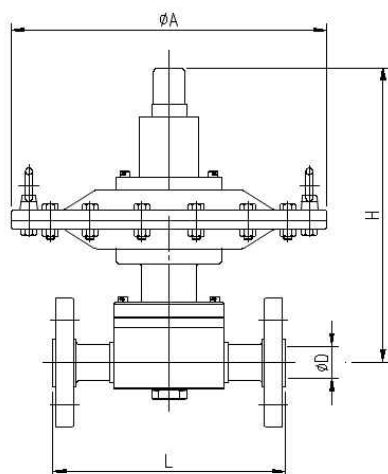
### 3. Model PCV, RV-31 & 32 Series

RV-31 : Micro Pressure Reducing Valves, for 1/2" to 2" Sizes

RV-32 : Micro Pressure Relief Valves, for 1/2" to 2" Sizes

#### Standard Specifications

- Valve Sizes : NPS 1/2" to 2" (DN 15 to 50)
- Pressure Ratings : ASME Class 150, 300
- Flanged, Threaded End Connections (Optional : Welding ends)
- Body made of 304SS, 316SS, 316L or Hastelloy, Titanium and other alloy steels.
- Applicable Media : Liquids, Gas
- Applicable Temp. : -10 ~ 80°C (Other ranges : optional)
- Minimum Applicable DP : 0.5 bar
- Spring Range : See next page Table
- Leakage Class : ANSI Class IV (Optional : Class V, VI)



< Fig. 6 >

Dimensions, Flanged (mm)				
Body Size (IN)	ØD	L	ØA	H
1/2"	15	209	295(with #3)	275(with #3)
3/4"	20	209	295(with #3)	275(with #3)
1"	25	220	295(with #3)	295(with #3)
1.5"	40	235	375(with #4)	385(with #4)
2"	50	254	375(with #4)	385(with #4)

< Table 5 > RV-21 & 22, Dimensions

Valve Rated Cv Table					
Size	1/2"(15)	3/4"(20)	1"(25)	1.5"(40)	2"(50)
Rated Cv	4	5.5	8	14	22
*. The 'Cv' recorded in the table above is the rated capacity(Max.), and please refer to the table on the next page for the applicable flow rate adjustment range.					

< Table 6 > RV-31 & 32, Valve Rated Cv



< Fig. 7 >

#### \*. Note

1. All data shown in this product specification are currently standard specifications of Valution and can be customized by order specification.
2. All data shown above are subject to change without notice.

### 3. Model PCV, RV-31 & 32 Series

RV-31 : Micro Pressure Reducing Valves, for 1/2" to 2" Sizes

RV-32 : Micro Pressure Relief Valves, for 1/2" to 2" Sizes

#### Specification Details

Valve Size		NPS 1/2 (DN 15)	NPS 3/4 (DN 20)	NPS 1 (DN 25)	NPS 1-1/2 (DN 40)	NPS 2 (DN 50)
Pressure Ratings		Class 150, 300				
Applicable Cv	Standard(Rated)	4	5.5	8	14	22
	Reduced Cv	0.02, 0.06 0.12, 0.25, 1, 2.5	0.02, 0.06 0.12, 0.25 1, 2.5, 4	0.02, 0.06 0.12, 0.25 1, 2.5, 4, 5.5	0.02, 0.06 0.12, 0.25 1, 2.5, 4, 5.5, 8	0.02, 0.06 0.12, 0.25 1, 2.5, 4, 5.5, 8, 14,
Max. permissible differential pressure		150 psi (10 bar)				
Max. permissible temperature range (medium temperature)		-20 to +60 °C				
Seat tightness class IEC 60534-4 or ANSI/FCI 70-3		Soft seated, minimum Class IV				
P2 Set pressure ranges		5~15 mbar, 10~30 mba, 25~60 mbar, 50~200 mbar, 0.1~0.6 bar, 0.2~1 bar, 0.8~2.5 bar, 2~5 bar, 4.5~10 bar				
Max. permissible pressure at operating diaphragm	Size #1, OD 200 E. Area : 154 cm <sup>2</sup>	5 bar, 12 bar				
	Size #2, OD 250 E. Area : 276 cm <sup>2</sup>	4 bar, 10 bar				
	Size #3, OD 290 E. Area : 371 cm <sup>2</sup>	3 bar, 10 bar				
	Size #4, OD 370 E. Area : 604 cm <sup>2</sup>	3 bar, 7 bar				
	Size #5, OD 480 E. Area : 1102 cm <sup>2</sup>	3 bar, 5 bar				
	Size #6, OD 550 E. Area : 1336 cm <sup>2</sup>	3 bar, 5 bar				
Pressure sensing		Integral (External : optional)				
Pressure gauges		Aavailable by optional (In, Out)				
Pressure gauges connection		G 1/4, (NPT 1/4 : with adapter)				

\*. Available other ranges

#### \*. Note

1. All data shown in this product specification are currently standard specifications of Valution and can be customized by order specification.
2. All data shown above are subject to change without notice.



■ Valution Inc.

27642) #284-81, Geumil-ro, Geumwang-eup, Eumseong-gun, Chungcheongbuk-do, Korea

T.82-43-877-7798, F.82-43-877-8821 Website : [www.valution1.com](http://www.valution1.com)